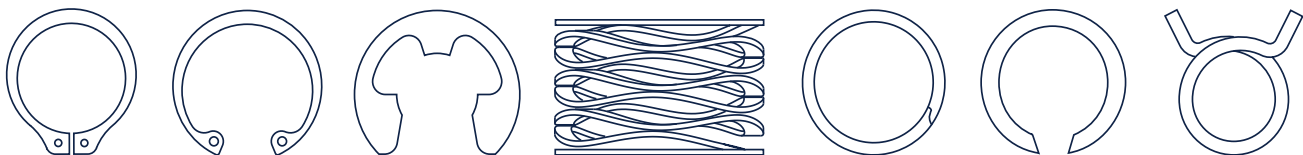


PRODUCT OVERVIEW

ROTORCLIP.COM

TAPERED SECTION RETAINING RINGS / CIRCLIPS | CONSTANT SECTION / SNAP RINGS
SPIRAL RETAINING RINGS | WAVE SPRINGS | SELF-COMPENSATING HOSE CLAMPS



APPLICATION DRIVEN SOLUTIONS®



Rotor Clip products deliver quality and strength, backed by traceability, expertise and customer trust.

YOUR APPLICATION, YOUR SOLUTION, WE MAKE THEM ALL™

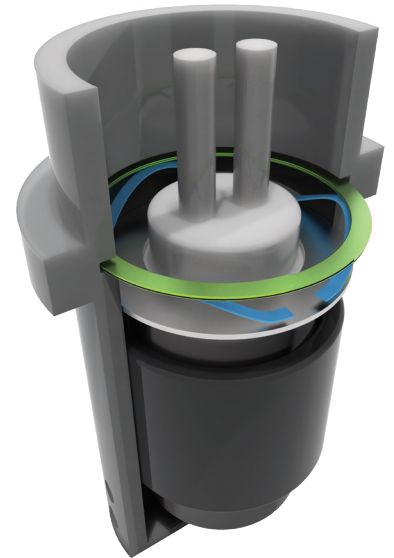
Rotor Clip is the global leader in the manufacture of Retaining Rings, Wave Springs and Hose Clamps. With over 20,000 standard parts, we specialize in engineering the right part for the right application, every time, whether it is a standard or custom.

20,000 STANDARDS, ENDLESS CUSTOM CAPABILITIES

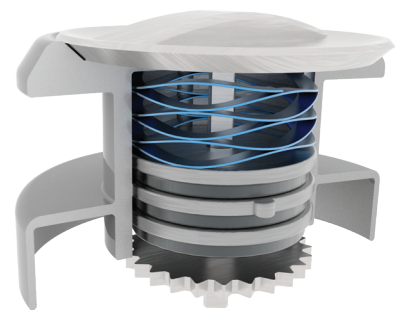
If our stock items are not the right fit, we are able to support your application requirements with a custom solution. We have designed and manufactured thousands of custom solutions across nearly every industry.

Our team of design, metallurgical and manufacturing engineers are available to consult with customers to solve difficult problems and ensure they receive the highest-quality, highest-performing products.

Throughout the years, Rotor Clip has received numerous quality awards from major OEMs, automotive manufacturers and distributors.



Exhaust sensor with flat end wave spring and spiral ring



Spinner reel with multi-turn wave spring

OUR PRODUCT OFFERINGS

- Tapered Section Rings/Circlips
- Constant Section Rings/Snap Rings
- Spiral Rings
- Wave Springs
- Hose Clamps
- Installation Tools



Linear worm actuator with internal retaining ring

OUR CERTIFICATIONS

AS 9100	IATF 16949	ISO 9001	ISO 14001	ISO 13485	TISAX
------------	---------------	-------------	--------------	--------------	-------

Learn about our extensive capabilities. Watch now.



TAPERED SECTION / CIRCLIPS

The most popular style of ring, they provide secure and reliable retention with their tapered shape. They are easy to install with manual or automated installation tools, providing an efficient, dependable assembly solution.

- Axial, radial, push-on and self-locking styles available
- Inch – DIN – ANSI Metric – JIS
- Carbon, stainless, beryllium copper & phosphor bronze standards; various finishes available
- Standards: .040" to 15" / 1mm to 1000mm



CONSTANT SECTION / SNAP RINGS

These rings have a uniform width and three-point contact with the groove making them ideal for tight clearances. Their lug-free design ensures effective performance across a wide range of industries and applications, and they are often specified for impact loading.

- Highly customizable
- Inch – DIN – Metric
- Carbon, stainless, beryllium copper & phosphor bronze standards; various finishes available
- Standards: .157" to 10" / 4mm to 450mm



SPIRAL RINGS

These coiled retaining rings provide 360° contact in the groove, acting as an artificial shoulder. They require no special tools for installation or removal, are easily customizable, and are available in a variety of alloys to suit diverse applications.

- Highly customizable
- Inch – DIN – Metric
- Carbon, 302 & 316 stainless standards; exotic alloys available for immediate production
- Standards: .250" to 10" / 6mm to 400mm



WAVE SPRINGS

Engineered springs coiled from flat wire, designed to save both space and weight in an application. Wave springs are highly customizable, from wire thickness, number of turns, end type and more, these springs are designed to ensure they meet diverse and demanding requirements.

- Single-turn, multi-turn, nested & round-wire styles available
- Available in plain ends, shim ends and patented flat ends
- Carbon & 17-7 stainless standards; exotic alloys available for immediate production
- Standards: .118" to 24" / 3 mm to 610 mm



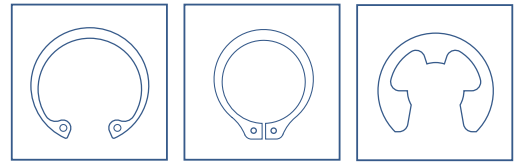
HOSE CLAMPS

Providing unparalleled advantages over other hose clamps, their self-compensating design allows for seamless expansion and contraction, eliminating the need for manual adjustments when temperatures fluctuate.



REQUEST
SAMPLES

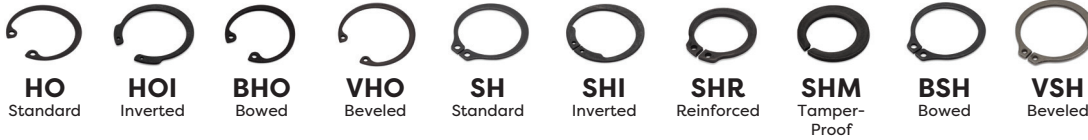
PRODUCT INDEX



Axially Assembled, Inch Tapered Section Retaining Rings

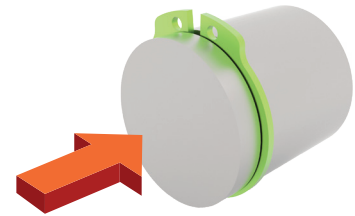
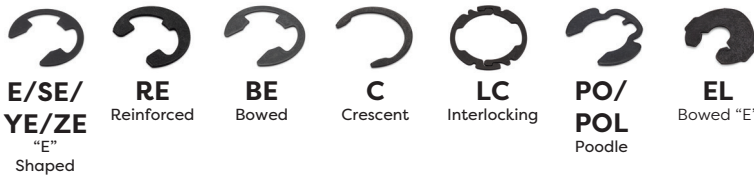
Internal

External



Radially Assembled, Inch Tapered Section Retaining Rings

External

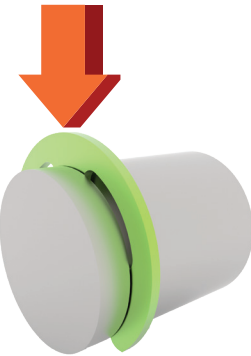
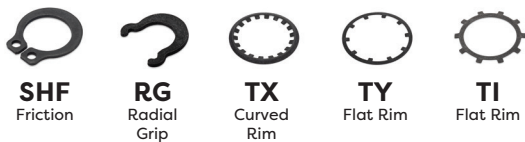


Axially Assembled

Self-Locking, Inch Tapered Section Retaining Rings

External

Internal

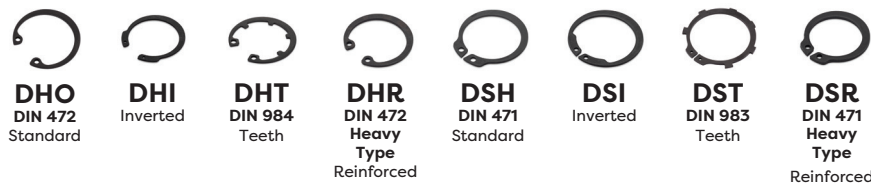


Radially Assembled

Axially Assembled, Metric Tapered Section Retaining Rings

Internal

External



Radially Assembled, Metric Tapered Section Retaining Rings

External



Self-Locking, Metric Tapered Section Retaining Rings

External

Internal



JIS "E" Retaining Rings

External



Axially Assembled, ANSI Metric Tapered Section Retaining Rings

Internal

External

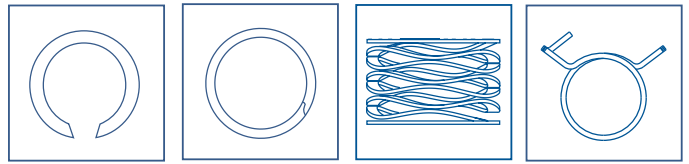


Radially Assembled, ANSI Metric Tapered Section Retaining Rings

External



PRODUCT INDEX



Inch Constant Section Retaining Rings

Internal

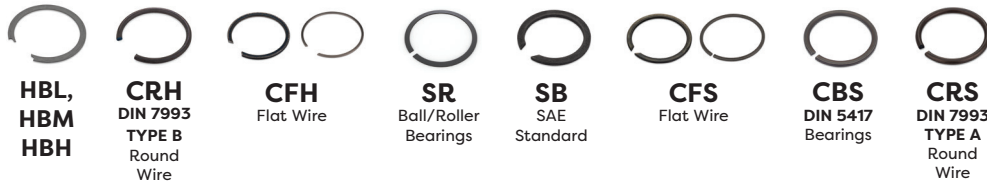
External



Metric Constant Section Retaining Rings

Internal

External



Shims

Internal/External



Inch Spiral Retaining Rings

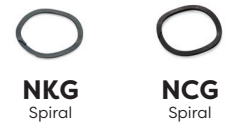
Internal

External



Spiral Wave Rings

Internal External



Metric Spiral Retaining Rings

Internal

External



Wave Springs

Single-Turn

Multi-Turn

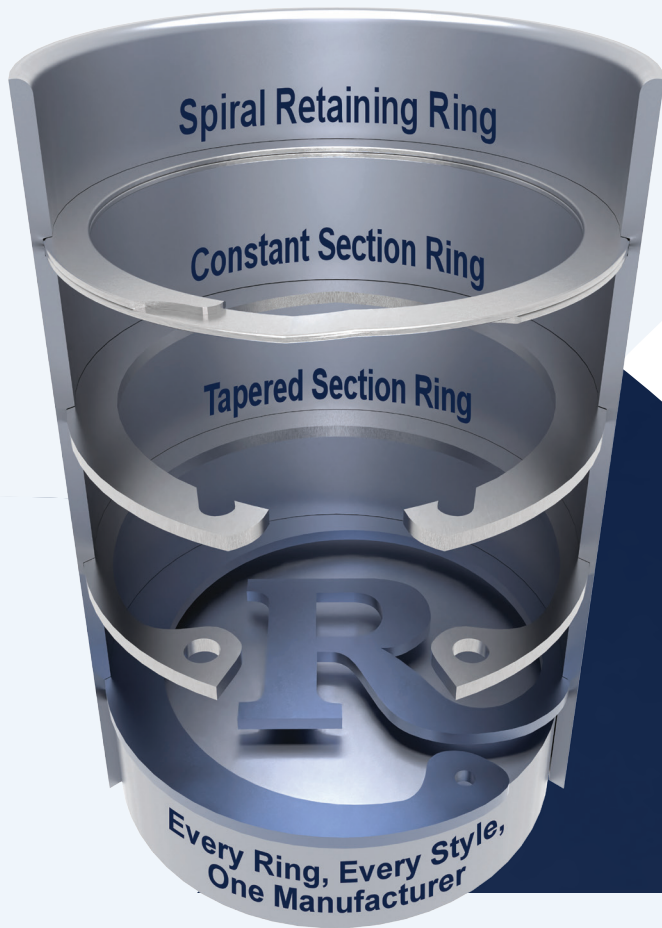


Self-Compensating Hose Clamps

Wire Clamps

Band Clamps





Coiled or Stamped, Engineered for You

- ® Every ring, every style,
one manufacturer
- ® Standard & custom
capabilities
- ® Diameters as small as .040"
- ® Stainless steel &
exotic alloys
readily available

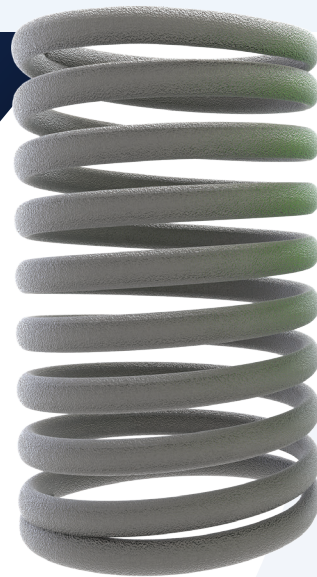
Your Application, Your Solution, We Make Them All™

® Reduce operating
heights by 50%

® Standard &
custom capabilities

® Diameters as
small as .118"

® Stainless steel &
exotic alloys
readily available



Traditional
Coil Spring



Rotor Clip
Multi-Turn Wave Spring

