

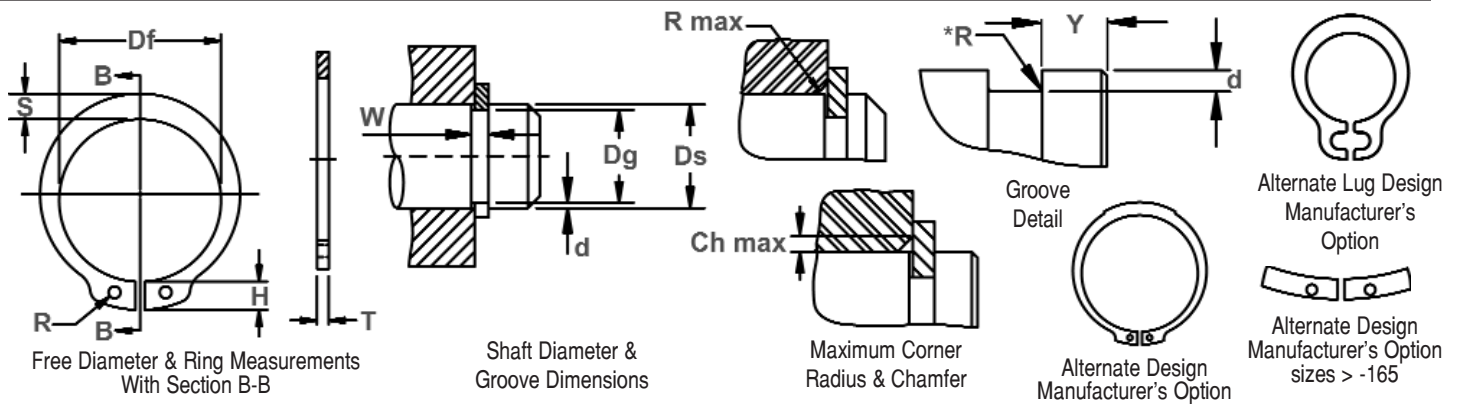


DSH Shaft Rings

(DIN 471)

Axially Assembled, External, Metric

Once installed in the groove of a shaft, the portion of the ring protruding from the groove (also called a "shoulder") holds an assembly in place.



RING NO.	SHAFT DIA. (mm)	GROOVE SIZE						RING SIZE & WEIGHT						SUPPLEMENTARY DATA							
		DIAMETER		WIDTH		DEPTH		THICKNESS ***		FREE DIAMETER		LUG HT.	MAX. SEC.	HOLE DIA.	WEIGHT	EDGE MARGIN	THRUST LOAD Ring	THRUST LOAD Groove	Allowable Rad/Cham.	Max. Load w/Ch Max.	RPM Limits
		Ds	Dg	TOL.	W Min.	d	T	Tol.	Df	Tol.	H Max.	S Ref.	R Min.	kg/1000	Y Min.	Pr kN	Pg kN	R/Ch Max.	P'r kN		
DSH-3	3	2,8		0,50	0,10	0,40		2,7		1,9	0,8	1,0	0,017	0,3	0,47	0,1	0,5	0,27	360000		
DSH-4	4	3,8	-0,04	0,50	0,10	0,40		3,7	+0,04	2,2	0,9	1,0	0,022	0,3	0,50	0,2	0,5	0,30	211000		
DSH-5	5	4,8		0,70	0,10	0,60	-0,05	4,7	-0,15	2,5	1,1	1,0	0,066	0,3	1,00	0,2	0,5	0,80	154000		
DSH-6	6	5,7		0,80	0,15	0,70		5,6		2,7	1,3	1,2	0,084	0,5	1,45	0,4	0,5	0,90	114000		
DSH-7	7	6,7		0,90	0,15	0,80		6,5	+0,06	3,1	1,4	1,2	0,121	0,5	2,60	0,5	0,5	1,40	121000		
DSH-8	8	7,6	-0,06	0,90	0,20	0,80		7,4	-0,18	3,2	1,5	1,2	0,158	0,6	3,00	0,8	0,5	2,00	96000		
DSH-9	9	8,6		1,10	0,20	1,00		8,4		3,3	1,7	1,2	0,300	0,6	3,50	0,9	0,5	2,40	85000		
DSH-10	10	9,6		1,10	0,20	1,00		9,3		3,3	1,8	1,5	0,340	0,6	4,00	1,0	1,0	2,40	84000		
DSH-11	11	10,5		1,10	0,25	1,00		10,2		3,3	1,8	1,5	0,410	0,8	4,50	1,4	1,0	2,40	70000		
DSH-12	12	11,5		1,10	0,25	1,00		11,0		3,3	1,8	1,7	0,500	0,8	5,00	1,5	1,0	2,40	75000		
DSH-13	13	12,4		1,10	0,30	1,00		11,9	+0,10	3,4	2,0	1,7	0,530	0,9	5,80	2,0	1,0	2,40	66000		
DSH-14	14	13,4	-0,11	1,10	0,30	1,00		12,9	-0,36	3,5	2,1	1,7	0,640	0,9	6,40	2,1	1,0	2,40	58000		
DSH-15	15	14,3		1,10	0,35	1,00		13,8		3,6	2,2	1,7	0,670	1,1	6,90	2,6	1,0	2,40	50000		
DSH-16	16	15,2		1,10	0,40	1,00		14,7		3,7	2,2	1,7	0,700	1,2	7,40	3,2	1,0	2,40	45000		
DSH-17	17	16,2		1,10	0,40	1,00		15,7		3,8	2,3	1,7	0,820	1,2	8,00	3,4	1,0	2,40	41000		
DSH-18	18	17,0		1,30	0,50	1,20		16,5		3,9	2,4	2,0	1,110	1,5	17,00	4,5	1,5	3,75	39000		
DSH-19	19	18,0		1,30	0,50	1,20		17,5		3,9	2,5	2,0	1,220	1,5	17,00	4,8	1,5	3,80	35000		
DSH-20	20	19,0		1,30	0,50	1,20	-0,06	18,5		4,0	2,6	2,0	1,300	1,5	17,10	5,0	1,5	3,85	32000		
DSH-21	21	20,0	-0,13	1,30	0,50	1,20		19,5	+0,13	4,1	2,7	2,0	1,420	1,5	16,80	5,3	1,5	3,75	29000		
DSH-22	22	21,0		1,30	0,50	1,20		20,5	-0,42	4,2	2,8	2,0	1,500	1,5	16,90	5,6	1,5	3,80	27000		
DSH-23	23	22,0	-0,15	1,30	0,50	1,20		21,5		4,3	2,9	2,0	1,630	1,5	16,60	5,9	1,5	3,80	25000		
DSH-24	24	22,9		1,30	0,55	1,20		22,2		4,4	3,0	2,0	1,770	1,7	16,10	6,7	1,5	3,65	27000		
DSH-25	25	23,9		1,30	0,55	1,20		23,2		4,4	3,0	2,0	1,900	1,7	16,20	7,0	1,5	3,70	25000		
DSH-26	26	24,9		1,30	0,55	1,20		24,2		4,5	3,1	2,0	1,960	1,7	16,10	7,3	1,5	3,70	24000		
DSH-27	27	25,6	-0,21	1,30	0,70	1,20		24,9	+0,21	4,6	3,1	2,0	2,080	2,1	16,40	9,6	1,5	3,80	22500		
DSH-28	28	26,6		1,60	0,70	1,50		25,9	-0,42	4,7	3,2	2,0	2,920	2,1	32,10	10,0	1,5	7,50	21200		
DSH-29	29	27,6		1,60	0,70	1,50		26,9		4,8	3,4	2,0	3,200	2,1	31,80	10,3	1,5	7,45	20000		
DSH-30	30	28,6		1,60	0,70	1,50		27,9		5,0	3,5	2,0	3,320	2,1	32,10	10,7	1,5	7,65	18900		
DSH-31	31	29,3		1,60	0,85	1,50		28,6		5,1	3,5	2,5	3,450	2,6	31,50	13,4	2,0	5,60	17900		
DSH-32	32	30,3		1,60	0,85	1,50		29,6		5,2	3,6	2,5	3,540	2,6	31,20	13,8	2,0	5,55	16900		
DSH-33	33	31,3	-0,25	1,60	0,85	1,50		30,5	+0,25	5,2	3,7	2,5	3,690	2,6	31,60	14,3	2,0	5,65	17400		
DSH-34	34	32,3		1,60	0,85	1,50		31,5	-0,50	5,4	3,8	2,5	3,800	2,6	31,30	14,7	2,0	5,60	16100		
DSH-35	35	33,0		1,60	1,00	1,50		32,2		5,6	3,9	2,5	4,000	3,0	30,80	17,8	2,0	5,55	15500		

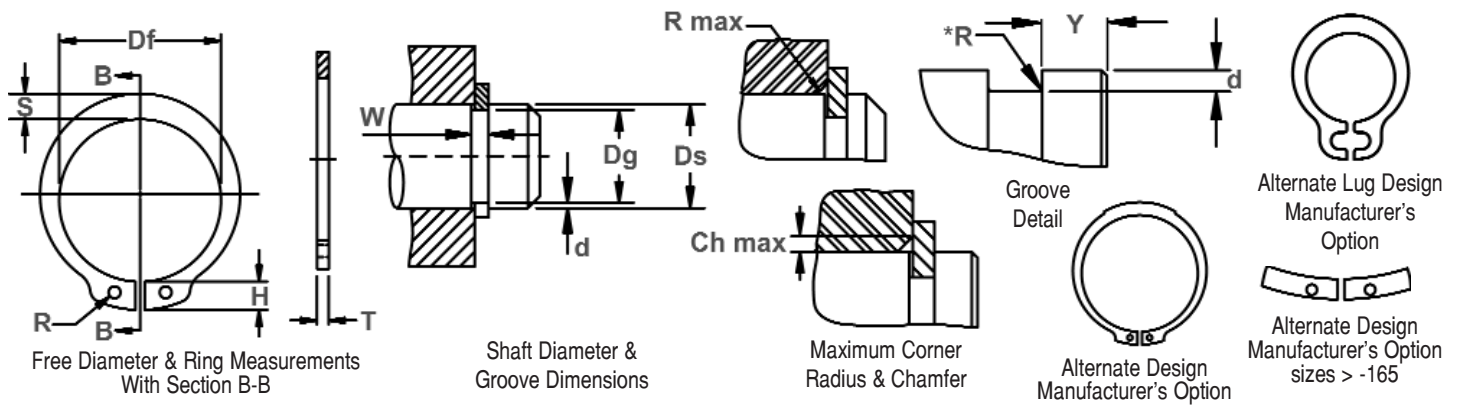
ALL DIMENSIONS IN MILLIMETERS.

*The radius "R" on the load side must not exceed 0.1T.

*** FOR PLATED RINGS, ADD 0.05 TO THE LISTED MAXIMUM THICKNESS. MAXIMUM RING THICKNESS WILL BE A MINIMUM OF 0.005

LESS THAN THE LISTED GROOVE WIDTH (W) MINIMUM.

FOR HARDNESS SPECIFICATIONS, SEE END OF SECTION.



RING NO.	SHAFT DIA. (mm)	GROOVE SIZE						RING SIZE & WEIGHT						SUPPLEMENTARY DATA						
		DIAMETER		WIDTH	DEPTH		THICKNESS ***		FREE DIAMETER		LUG HT.	MAX. SEC.	HOLE DIA.	WEIGHT	EDGE MARGIN	THRUST LOAD Ring	THRUST LOAD Groove	Allowable Rad/Cham.	Max. Load W/Ch Max.	RPM Limits
		Ds	Dg	TOL.	W Min.	d	T	Tol.	Df	Tol.	H Max.	S Ref.	R Min.	kg/1000	Y Min.	Pr kN	Pg kN	R/Ch Max.	P'r kN	
DSH-36	36	34,0		1,85	1,00	1,75		33,2		5,6	4,0	2,5	5,000	3,0	49,40	18,3	2,0	9,00	14500	
DSH-37	37	35,0		1,85	1,00	1,75		34,2	+0,25	5,7	4,1	2,5	5,370	3,0	50,00	18,8	2,0	9,15	14100	
DSH-38	38	36,0		1,85	1,00	1,75		35,2	-0,50	5,8	4,2	2,5	5,620	3,0	49,50	19,3	2,0	9,10	13600	
DSH-39	39	37,0		1,85	1,00	1,75		36,0		5,9	4,3	2,5	5,850	3,0	49,80	19,9	2,0	9,25	14500	
DSH-40	40	37,5		1,85	1,25	1,75		36,5		6,0	4,4	2,5	6,030	3,8	51,00	25,3	2,0	9,50	14300	
DSH-41	41	38,5		1,85	1,25	1,75		37,5		6,2	4,5	2,5	6,215	3,8	50,10	26,0	2,0	9,40	13500	
DSH-42	42	39,5	-0,25	1,85	1,25	1,75	-0,06	38,5	+0,39	6,5	4,5	2,5	6,500	3,8	50,00	26,7	2,0	9,45	13000	
DSH-44	44	41,5		1,85	1,25	1,75		40,5	-0,90	6,6	4,6	2,5	7,000	3,8	48,50	28,0	2,0	9,20	11800	
DSH-45	45	42,5		1,85	1,25	1,75		41,5		6,7	4,7	2,5	7,500	3,8	49,0	28,6	2,0	9,35	11400	
DSH-46	46	43,5		1,85	1,25	1,75		42,5		6,7	4,8	2,5	7,600	3,8	48,9	29,4	2,0	9,40	10900	
DSH-47	47	44,5		1,85	1,25	1,75		43,5		6,8	4,9	2,5	7,500	3,8	49,5	30,0	2,0	9,55	11000	
DSH-48	48	45,5		1,85	1,25	1,75		44,5		6,9	5,0	2,5	7,900	3,8	49,4	30,7	2,0	9,55	10000	
DSH-50	50	47,0		2,15	1,50	2,00		45,8		6,9	5,1	2,5	10,20	4,5	73,3	38,0	2,0	14,40	11000	
DSH-52	52	49,0		2,15	1,50	2,00		47,8		7,0	5,2	2,5	11,10	4,5	73,1	39,7	2,5	11,50	10000	
DSH-54	54	51,0		2,15	1,50	2,00		49,8		7,1	5,3	2,5	11,30	4,5	71,2	41,2	2,5	11,30	9000	
DSH-55	55	52,0		2,15	1,50	2,00		50,8		7,2	5,4	2,5	11,40	4,5	71,4	42,0	2,5	11,40	9000	
DSH-56	56	53,0		2,15	1,50	2,00		51,8		7,3	5,5	2,5	11,80	4,5	70,8	42,8	2,5	11,30	9000	
DSH-57	57	54,0		2,15	1,50	2,00		52,8		7,3	5,5	2,5	12,20	4,5	70,9	43,7	2,5	11,40	8000	
DSH-58	58	55,0		2,15	1,50	2,00		53,8		7,3	5,6	2,5	12,60	4,5	71,1	44,3	2,5	11,50	8000	
DSH-60	60	57,0		2,15	1,50	2,00		55,8		7,4	5,8	2,5	12,90	4,5	69,2	46,0	2,5	11,30	8000	
DSH-62	62	59,0		2,15	1,50	2,00	-0,07	57,8		7,5	6,0	2,5	14,30	4,5	69,3	47,5	2,5	11,40	7000	
DSH-63	63	60,0	-0,30	2,15	1,50	2,00		58,8		7,6	6,2	2,5	15,90	4,5	70,2	48,3	2,5	11,60	7000	
DSH-65	65	62,0		2,65	1,50	2,50		60,8		7,8	6,3	3,0	18,20	4,5	135,0	49,8	2,5	22,70	7000	
DSH-67	67	64,0		2,65	1,50	2,50		62,5	+0,46	7,9	6,4	3,0	20,30	4,5	136,0	51,3	2,5	23,00	7000	
DSH-68	68	65,0		2,65	1,50	2,50		63,5	-1,10	8,0	6,5	3,0	21,80	4,5	135,0	52,2	2,5	23,10	7000	
DSH-70	70	67,0		2,65	1,50	2,50		65,5		8,1	6,6	3,0	22,00	4,5	134,0	53,8	2,5	23,00	7000	
DSH-72	72	69,0		2,65	1,50	2,50		67,5		8,2	6,8	3,0	22,50	4,5	131,0	55,3	2,5	22,80	6000	
DSH-75	75	72,0		2,65	1,50	2,50		70,5		8,4	7,0	3,0	24,60	4,5	130,0	57,6	2,5	22,80	6000	
DSH-77	77	74,0		2,65	1,50	2,50		72,5		8,5	7,2	3,0	25,70	4,5	131,0	59,3	3,0	19,70	6000	
DSH-78	78	75,0		2,65	1,50	2,50		73,5		8,6	7,3	3,0	26,20	4,5	131,0	60,0	3,0	19,70	5000	
DSH-80	80	76,5		2,65	1,75	2,50		74,5		8,6	7,4	3,0	27,30	5,3	128,0	71,6	3,0	19,50	6000	
DSH-82	82	78,5		2,65	1,75	2,50		76,5		8,7	8,7	3,0	31,20	5,3	128,0	73,5	3,0	19,60	6000	
DSH-85	85	81,5	-0,35	3,15	1,75	3,00	-0,08	79,5		8,7	7,8	3,5	36,40	5,3	215,0	76,2	3,0	33,40	6000	

ALL DIMENSIONS IN MILLIMETERS.

*The radius "R" on the load side must not exceed 0.1T.

*** FOR PLATED RINGS, ADD 0.05 TO THE LISTED MAXIMUM THICKNESS. MAXIMUM RING THICKNESS WILL BE A MINIMUM OF 0.005 LESS THAN THE LISTED GROOVE WIDTH (W) MINIMUM. FOR HARDNESS SPECIFICATIONS, SEE END OF SECTION.

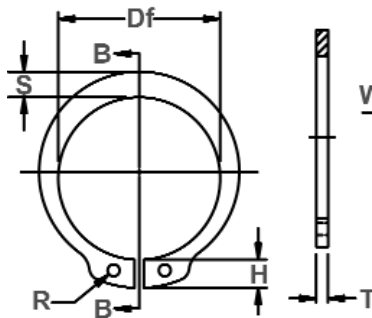


DSH Shaft Rings

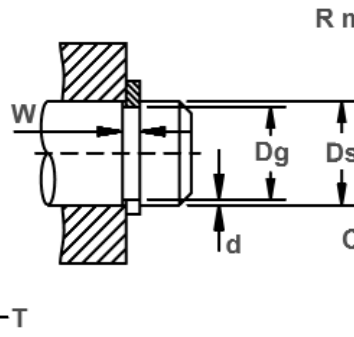
(DIN 471)

Axially Assembled, External, Metric

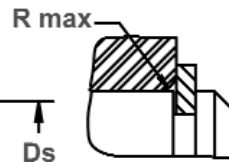
Once installed in the groove of a shaft, the portion of the ring protruding from the groove (also called a "shoulder") holds an assembly in place.



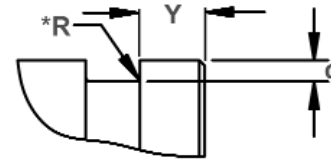
Free Diameter & Ring Measurements With Section B-B



Shaft Diameter & Groove Dimensions



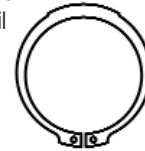
Maximum Corner Radius & Chamfer



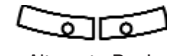
Groove Detail



Alternate Lug Design Manufacturer's Option



Alternate Design Manufacturer's Option



Alternate Design Manufacturer's Option sizes > -165

RING NO.	SHAFT DIA. (mm)		GROOVE SIZE				RING SIZE & WEIGHT							SUPPLEMENTARY DATA					
	Ds	Dg	TOL.	W Min.	d	T	Tol.	Df	Tol.	H Max.	S Ref.	R Min.	kg/1000	Y Min.	Pr kN	Pg kN	Allowable Rad/Cham. R/Ch Max.	Max. Load w/Ch Max. P'r kN	RPM Limits
DSH-87	87	83.5		3,15	1,75	3,00		81,5		8,8	7,9	3,5	39,80	5,3	222,0	78,2	3,0	34,80	5000
DSH-88	88	84,5		3,15	1,75	3,00		82,5		8,8	8,0	3,5	41,20	5,3	221,0	79,0	3,0	34,80	5000
DSH-90	90	86,5		3,15	1,75	3,00		84,5		8,8	8,2	3,5	44,50	5,3	217,0	80,0	3,0	34,40	5000
DSH-92	92	88,5	-0,35	3,15	1,75	3,00	-0,08	86,5		9,0	8,4	3,5	46,00	5,3	217,0	82,0	3,5	29,60	5000
DSH-95	95	91,5		3,15	1,75	3,00		89,5		9,4	8,6	3,5	49,00	5,3	212,0	85,0	3,5	29,20	5000
DSH-97	97	93,5		3,15	1,75	3,00		91,5		9,4	8,8	3,5	50,20	5,3	211,0	87,0	3,5	29,40	4000
DSH-97	98	94,5		3,15	1,75	3,00		91,5		9,4	8,8	3,5	50,20	5,3	208,0	88,0	3,5	29,00	4000
DSH-100	100	96,5		3,15	1,75	3,00		94,5		9,6	9,0	3,5	53,70	5,3	206,0	90,0	3,5	29,00	4000
DSH-102	102	98,0		4,15	2,00	4,00		95,0		9,7	9,2	3,5	78,00	6,0	482,0	104,0	3,5	68,50	5000
DSH-105	105	101,0		4,15	2,00	4,00		98,0	+0,54	9,9	9,9	3,5	80,00	6,0	471,0	107,0	3,5	67,70	5000
DSH-107	107	103,0		4,15	2,00	4,00		100,0	-1,30	10,0	9,5	3,5	81,00	6,0	465,0	110,0	3,5	67,30	5000
DSH-107	108	104,0		4,15	2,00	4,00		100,0		10,0	9,5	3,5	81,00	6,0	459,0	111,0	3,5	66,30	4000
DSH-110	110	106,0		4,15	2,00	4,00		103,0		10,1	9,6	3,5	82,00	6,0	457,0	113,0	3,5	66,90	4000
DSH-112	112	108,0	-0,54	4,15	2,00	4,00		105,0		10,3	9,7	3,5	83,00	6,0	451,0	115,0	3,5	66,60	4000
DSH-115	115	111,0		4,15	2,00	4,00		108,0		10,6	9,8	3,5	84,00	6,0	438,0	118,0	3,5	65,50	4000
DSH-117	117	113,0		4,15	2,00	4,00		110,0		10,8	10,0	3,5	85,00	6,0	437,0	120,0	3,5	65,60	4000
DSH-117	118	114,0		4,15	2,00	4,00		110,0		10,8	10,0	3,5	85,00	6,0	430,0	121,0	3,5	64,80	4000
DSH-120	120	116,0		4,15	2,00	4,00		113,0		11,0	10,2	3,5	86,00	6,0	424,0	123,0	3,5	64,50	4000
DSH-122	122	118,0		4,15	2,00	4,00		115,0		11,2	10,3	4,0	88,00	6,0	418,0	125,0	4,0	56,60	4000
DSH-125	125	121,0		4,15	2,00	4,00	-0,10	118,0		11,4	10,4	4,0	90,00	6,0	411,0	128,0	4,0	56,50	3000
DSH-127	127	123,0		4,15	2,00	4,00		120,0		11,4	10,5	4,0	95,00	6,0	407,0	130,0	4,0	56,10	3000
DSH-127	128	124,0		4,15	2,00	4,00		120,0		11,4	10,5	4,0	95,00	6,0	401,0	131,0	4,0	55,60	3000
DSH-130	130	126,0		4,15	2,00	4,00		123,0		11,6	10,7	4,0	100,0	6,0	395,0	134,0	4,0	55,20	3000
DSH-132	132	128,0		4,15	2,00	4,00		125,0		11,7	10,8	4,0	103,0	6,0	396,0	136,0	4,0	55,60	3000
DSH-135	135	131,0		4,15	2,00	4,00		128,0		11,8	11,0	4,0	104,0	6,0	389,0	139,0	4,0	55,40	3000
DSH-137	137	133,0		4,15	2,00	4,00		130,0		11,9	11,0	4,0	107,0	6,0	380,0	141,0	4,0	54,40	3000
DSH-137	138	134,0	-0,63	4,15	2,00	4,00		130,0	+0,63	11,9	11,0	4,0	107,0	6,0	381,0	142,0	4,0	54,70	3000
DSH-140	140	136,0		4,15	2,00	4,00		133,0	-1,50	12,0	11,2	4,0	110,0	6,0	376,0	144,0	4,0	54,40	3000
DSH-142	142	138,0		4,15	2,00	4,00		135,0		12,1	11,3	4,0	112,0	6,0	370,0	146,0	4,0	54,00	3000
DSH-145	145	141,0		4,15	2,00	4,00		138,0		12,2	11,5	4,0	115,0	6,0	367,0	149,0	4,0	53,80	3000
DSH-147	147	143,0		4,15	2,00	4,00		140,0		12,3	11,6	4,0	116,0	6,0	361,0	151,0	4,0	53,50	3000
DSH-147	148	144,0		4,15	2,00	4,00		140,0		12,3	11,6	4,0	116,0	6,0	357,0	152,0	4,0	53,00	2000
DSH-150	150	145,0		4,15	2,50	4,00		142,0		13,0	11,8	4,0	120,0	7,5	357,0	193,0	4,0	53,40	2000

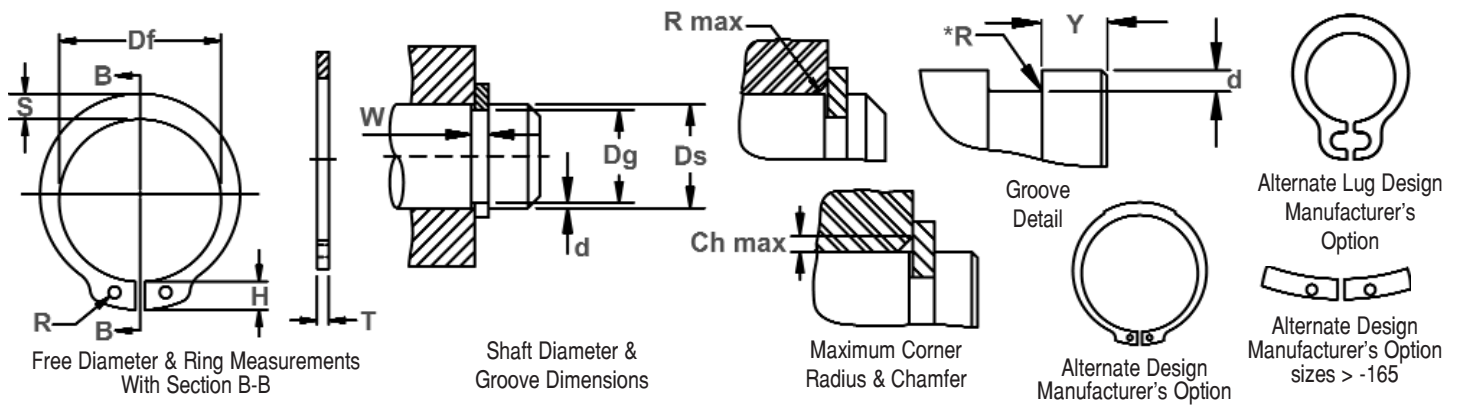
ALL DIMENSIONS IN MILLIMETERS.

*The radius "R" on the load side must not exceed 0.1T.

*** FOR PLATED RINGS, ADD 0.05 TO THE LISTED MAXIMUM THICKNESS. MAXIMUM RING THICKNESS WILL BE A MINIMUM OF 0.005

LESS THAN THE LISTED GROOVE WIDTH (W) MINIMUM.

FOR HARDNESS SPECIFICATIONS, SEE END OF SECTION.



RING NO.	SHAFT DIA. (mm)		GROOVE SIZE				RING SIZE & WEIGHT						SUPPLEMENTARY DATA						
	Ds	Dg	TOL.	W Min.	d	THICKNESS ***		FREE DIAMETER		LUG HT.	MAX. SEC.	HOLE DIA.	WEIGHT	EDGE MARGIN	THRUST LOAD Ring	THRUST LOAD Groove	Allowable Rad/Cham.	Max. Load w/Ch Max.	RPM Limits
						T	Tol.	Df	Tol.										
DSH-152	152	147,0		4,15	2,50	4,00		143,0		13,0	11,9	4,0	128,0	7,5	356,0	195,0	4,0	53,10	3000
DSH-155	155	150,0		4,15	2,50	4,00		146,0		13,0	12,0	4,0	135,0	7,5	352,0	199,0	4,0	52,60	3000
DSH-157	157	152,0		4,15	2,50	4,00		148,0		13,1	12,0	4,0	140,0	7,5	352,0	202,0	4,0	52,50	3000
DSH-157	158	153,0		4,15	2,50	4,00		148,0		13,1	12,0	4,0	140,0	7,5	353,0	203,0	4,0	52,70	3000
DSH-160	160	155,0		4,15	2,50	4,00		151,0		13,3	12,2	4,0	150,0	7,5	349,0	206,0	4,0	52,20	3000
DSH-162	162	157,0		4,15	2,50	4,00		152,5		13,3	12,3	4,0	155,0	7,5	348,0	208,0	5,0	41,70	3000
DSH-165	165	160,0		4,15	2,50	4,00		155,5		13,5	12,5	4,0	160,0	7,5	345,0	212,0	5,0	41,40	3000
DSH-167	167	162,0		4,15	2,50	4,00		157,5		13,5	12,9	4,0	163,0	7,5	354,0	215,0	5,0	42,50	3000
DSH-167	168	163,0	-0,63	4,15	2,50	4,00	-0,10	157,5	+0,63	13,5	12,9	4,0	163,0	7,5	353,0	216,0	5,0	42,40	2000
DSH-170	170	165,0		4,15	2,50	4,00		160,5	-1,50	13,5	12,9	4,0	170,0	7,5	349,0	219,0	5,0	41,90	2000
DSH-170	172	167,0		4,15	2,50	4,00		160,5		13,5	12,9	4,0	170,0	7,5	344,0	221,0	5,0	41,30	2000
DSH-175	175	170,0		4,15	2,50	4,00		165,5		13,5	12,9	4,0	180,0	7,5	340,0	225,0	5,0	40,70	2000
DSH-177	177	172,0		4,15	2,50	4,00		167,5		14,2	13,5	4,0	183,0	7,5	335,0	228,0	5,0	40,20	2000
DSH-177	178	173,0		4,15	2,50	4,00		167,5		14,2	13,5	4,0	183,0	7,5	349,0	229,0	5,0	42,00	2000
DSH-180	180	175,0		4,15	2,50	4,00		170,5		14,2	13,5	4,0	190,0	7,5	345,0	232,0	5,0	41,40	2000
DSH-180	182	177,0		4,15	2,50	4,00		170,5		14,2	13,5	4,0	190,0	7,5	341,0	235,0	5,0	41,00	2000
DSH-185	185	180,0		4,15	2,50	4,00		175,5		14,2	13,5	4,0	200,0	7,5	336,0	238,0	5,0	40,40	2000
DSH-187	187	182,0		4,15	2,50	4,00		177,5		14,2	14,0	4,0	203,0	7,5	338,0	241,0	5,0	40,50	2000
DSH-187	188	183,0		4,15	2,50	4,00		177,5		14,2	14,0	4,0	203,0	7,5	337,0	242,0	5,0	40,60	2000
DSH-190	190	185,0		4,15	2,50	4,00		180,5		14,2	14,0	4,0	210,0	7,5	333,0	245,0	5,0	40,00	2000
DSH-190	192	187,0		4,15	2,50	4,00		180,5		14,2	14,0	4,0	210,0	7,5	330,0	248,0	5,0	39,60	2000
DSH-195	195	190,0		4,15	2,50	4,00		185,5		14,2	14,0	4,0	220,0	7,5	325,0	251,0	5,0	39,00	2000
DSH-197	197	192,0		4,15	2,50	4,00		187,5		14,2	14,0	4,0	223,0	7,5	322,0	254,0	5,0	38,60	2000
DSH-197	198	193,0		4,15	2,50	4,00		187,5		14,2	14,0	4,0	223,0	7,5	322,0	255,0	5,0	38,70	2000
DSH-200	200	195,0		4,15	2,50	4,00		190,5	+0,72	14,2	14,0	4,0	230,0	7,5	319,0	258,0	5,0	38,30	2000
DSH-202	202	196,0	-0,72	5,15	3,00	5,00		190,0	-1,70	14,2	14,0	4,0	235,0	9,0	624,0	312,0	6,0	62,50	2000
DSH-205	205	199,0		5,15	3,00	5,00		193,0		14,2	14,0	4,0	243,0	9,0	611,0	317,0	6,0	61,30	2000
DSH-205	207	201,0		5,15	3,00	5,00		193,0		14,2	14,0	4,0	243,0	9,0	608,0	320,0	6,0	60,90	2000
DSH-205	208	202,0		5,15	3,00	5,00		193,0		14,2	14,0	4,0	243,0	9,0	605,0	321,0	6,0	60,50	2000
DSH-210	210	204,0		5,15	3,00	5,00		198,0	-0,12	14,2	14,0	4,0	248,0	9,0	598,0	325,0	6,0	59,90	2000
DSH-210	212	206,0		5,15	3,00	5,00		198,0		14,2	14,0	4,0	248,0	9,0	593,0	328,0	6,0	59,50	2000
DSH-215	215	209,0		5,15	3,00	5,00		203,0		14,2	14,0	4,0	260,0	9,0	585,0	332,0	6,0	58,50	2000
DSH-215	217	211,0		5,15	3,00	5,00		203,0		14,2	14,0	4,0	260,0	9,0	580,0	336,0	6,0	58,10	2000
DSH-215	218	212,0		5,15	3,00	5,00		203,0		14,2	14,0	4,0	260,0	9,0	577,0	337,0	6,0	57,80	2000

ALL DIMENSIONS IN MILLIMETERS.

*The radius "R" on the load side must not exceed 0.1T.

*** FOR PLATED RINGS, ADD 0.05 TO THE LISTED MAXIMUM THICKNESS. MAXIMUM RING THICKNESS WILL BE A MINIMUM OF 0.005 LESS THAN THE LISTED GROOVE WIDTH (W) MINIMUM. FOR HARDNESS SPECIFICATIONS, SEE END OF SECTION.

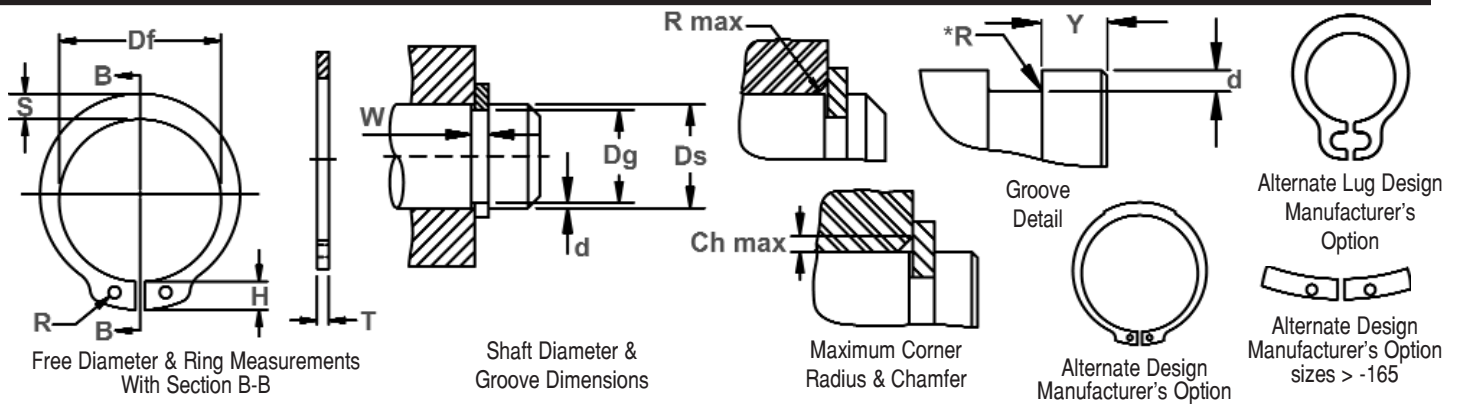


DSH Shaft Rings

(DIN 471)

Axially Assembled, External, Metric

Once installed in the groove of a shaft, the portion of the ring protruding from the groove (also called a "shoulder") holds an assembly in place.



RING NO.	SHAFT DIA. (mm)	GROOVE SIZE					RING SIZE & WEIGHT						SUPPLEMENTARY DATA						
		DIAMETER		WIDTH	DEPTH		THICKNESS ***		FREE DIAMETER	LUG HT.	MAX. SEC.	HOLE DIA.	WEIGHT	EDGE MARGIN	THRUST LOAD Ring	THRUST LOAD Groove	Allowable Rad/Cham.	Max. Load w/Ch Max.	RPM Limits
		Ds	Dg	TOL.	W Min.	d	T	Tol.	Df	Tol.	H Max.	S Ref.	R Min.	kg/1000	Y Min.	Pr kN	Pg kN	R/Ch Max.	P'r kN
DSH-220	220	214,0		5,15	3,00	5,00		208,0		14,2	14,0	4,0	265,0	9,0	572,0	340,0	6,0	57,30	2000
DSH-220	222	216,0		5,15	3,00	5,00		208,0		14,2	14,0	4,0	265,0	9,0	567,0	343,0	6,0	56,80	2000
DSH-225	225	219,0		5,15	3,00	5,00		213,0		14,2	14,0	4,0	280,0	9,0	559,0	349,0	6,0	56,00	2000
DSH-225	227	221,0		5,15	3,00	5,00		213,0		14,2	14,0	4,0	280,0	9,0	555,0	351,0	6,0	55,50	1000
DSH-225	228	222,0		5,15	3,00	5,00		213,0		14,2	14,0	4,0	280,0	9,0	552,0	353,0	6,0	55,40	1000
DSH-230	230	224,0		5,15	3,00	5,00		218,0		14,2	14,0	4,0	290,0	9,0	548,0	356,0	6,0	55,00	1000
DSH-230	232	226,0		5,15	3,00	5,00		218,0		14,2	14,0	4,0	290,0	9,0	543,0	359,0	6,0	54,50	1000
DSH-235	235	229,0		5,15	3,00	5,00		223,0		14,2	14,0	4,0	305,0	9,0	537,0	364,0	6,0	53,80	1000
DSH-235	237	231,0	-0,72	5,15	3,00	5,00		223,0		14,2	14,0	4,0	305,0	9,0	532,0	367,0	6,0	53,40	1000
DSH-235	238	232,0		5,15	3,00	5,00		223,0		14,2	14,0	4,0	305,0	9,0	530,0	369,0	6,0	53,00	1000
DSH-240	240	234,0		5,15	3,00	5,00		228,0	+0,72	14,2	14,0	4,0	310,0	9,0	530,0	372,0	6,0	53,00	1000
DSH-240	242	236,0		5,15	3,00	5,00		228,0	-1,70	14,2	14,0	4,0	310,0	9,0	520,0	375,0	6,0	52,20	1000
DSH-245	245	239,0		5,15	3,00	5,00		233,0		14,2	14,0	4,0	325,0	9,0	515,0	380,0	6,0	51,50	1000
DSH-245	247	241,0		5,15	3,00	5,00	-0,12	233,0		14,2	14,0	4,0	325,0	9,0	511,0	383,0	6,0	51,20	1000
DSH-245	248	242,0		5,15	3,00	5,00		233,0		14,2	14,0	4,0	325,0	9,0	508,0	385,0	6,0	50,90	1000
DSH-250	250	244,0		5,15	3,00	5,00		238,0		14,2	14,0	4,0	335,0	9,0	504,0	388,0	6,0	50,50	1000
DSH-250	252	244,0		5,15	4,00	5,00		238,0		16,2	16,0	5,0	335,0	12,0	563,0	519,0	6,0	56,40	1000
DSH-255	255	247,0		5,15	4,00	5,00		240,0		16,2	16,0	5,0	348,0	12,0	557,0	525,0	6,0	55,70	1000
DSH-255	257	249,0		5,15	4,00	5,00		240,0		16,2	16,0	5,0	348,0	12,0	551,0	529,0	6,0	55,20	1000
DSH-255	258	250,0		5,15	4,00	5,00		240,0		16,2	16,0	5,0	348,0	12,0	550,0	531,0	6,0	55,10	1000
DSH-260	260	252,0		5,15	4,00	5,00		245,0		16,2	16,0	5,0	355,0	12,0	540,0	535,0	6,0	54,60	1000
DSH-260	262	254,0		5,15	4,00	5,00		245,0		16,2	16,0	5,0	355,0	12,0	542,0	540,0	6,0	54,40	1000
DSH-265	265	257,0		5,15	4,00	5,00		250,0		16,2	16,0	5,0	370,0	12,0	536,0	546,0	6,0	53,70	1000
DSH-265	267	259,0		5,15	4,00	5,00		250,0		16,2	16,0	5,0	370,0	12,0	532,0	550,0	6,0	53,30	1000
DSH-265	268	260,0		5,15	4,00	5,00		250,0		16,2	16,0	5,0	370,0	12,0	529,0	553,0	6,0	53,00	1000
DSH-270	270	262,0	-0,81	5,15	4,00	5,00		255,0		16,2	16,0	5,0	375,0	12,0	525,0	556,0	6,0	52,50	1000
DSH-270	272	264,0		5,15	4,00	5,00		255,0		16,2	16,0	5,0	375,0	12,0	522,0	560,0	6,0	52,00	1000
DSH-275	275	267,0		5,15	4,00	5,00		260,0	+0,81	16,2	16,0	5,0	390,0	12,0	516,0	566,0	6,0	51,00	1000
DSH-275	277	269,0		5,15	4,00	5,00		260,0	-2,00	16,2	16,0	5,0	390,0	12,0	513,0	571,0	6,0	51,00	1000
DSH-275	278	270,0		5,15	4,00	5,00		260,0		16,2	16,0	5,0	390,0	12,0	510,0	574,0	6,0	51,00	1000
DSH-280	280	272,0		5,15	4,00	5,00		265,0		16,2	16,0	5,0	398,0	12,0	508,0	576,0	6,0	50,00	1000
DSH-280	282	274,0		5,15	4,00	5,00		265,0		16,2	16,0	5,0	398,0	12,0	503,0	580,0	6,0	50,00	1000

ALL DIMENSIONS IN MILLIMETERS.

*The radius "R" on the load side must not exceed 0.1T.

*** FOR PLATED RINGS, ADD 0.05 TO THE LISTED MAXIMUM THICKNESS. MAXIMUM RING THICKNESS WILL BE A MINIMUM OF 0.005

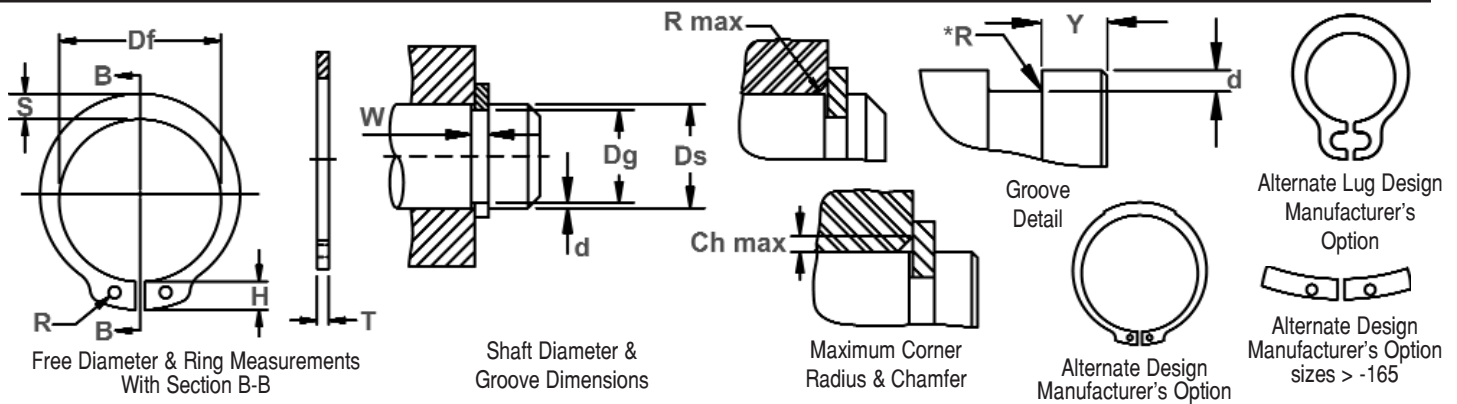
LESS THAN THE LISTED GROOVE WIDTH (W) MINIMUM.

FOR HARDNESS SPECIFICATIONS, SEE END OF SECTION.

HARDNESS RANGES: STAINLESS STEEL RINGS (DIN 1.4122 X39CrMo17)

RING TYPE	SIZE RANGE	HARDNESS			
		HV	HRC	15N	30N
DSH	ALL	471-577	47-54	83.9-87.4	65.8-72





RING NO.	SHAFT DIA. (mm)	GROOVE SIZE				RING SIZE & WEIGHT						SUPPLEMENTARY DATA							
		DIAMETER		WIDTH	DEPTH	THICKNESS ***		FREE DIAMETER		LUG HT.	MAX. SEC.	HOLE DIA.	WEIGHT	EDGE MARGIN	THRUST LOAD Ring	THRUST LOAD Groove	Allowable Rad/Cham.	Max. Load w/Ch Max.	RPM Limits
		Ds	Dg	TOL.	W Min.	d	T	Tol.	Df	Tol.	H Max.	S Ref.	R Min.	kg/1000	Y Min.	Pr kN	Pg kN	R/Ch Max.	P'r kN
DSH-285	285	277,0		5,15	4,00	5,00		270,0		16,2	16,0	5,0	410,0	12,0	499,0	587,0	6,0	50,00	1000
DSH-285	287	279,0		5,15	4,00	5,00		270,0		16,2	16,0	5,0	410,0	12,0	494,0	591,0	6,0	49,00	1000
DSH-285	288	280,0		5,15	4,00	5,00		270,0		16,2	16,0	5,0	410,0	12,0	493,0	594,0	6,0	49,00	1000
DSH-290	290	282,0		5,15	4,00	5,00	-0,12	275,0		16,2	16,0	5,0	418,0	12,0	490,0	599,0	6,0	49,00	1000
DSH-290	292	284,0		5,15	4,00	5,00		275,0		16,2	16,0	5,0	418,0	12,0	487,0	603,0	6,0	48,00	1000
DSH-295	295	287,0	-0,81	5,15	4,00	5,00		280,0	+0,81	16,2	16,0	5,0	430,0	12,0	481,0	609,0	6,0	48,00	1000
DSH-295	297	289,0		5,15	4,00	5,00		280,0	-2,00	16,2	16,0	5,0	430,0	12,0	479,0	613,0	6,0	48,00	1000
DSH-295	298	290,0		5,15	4,00	5,00		280,0		16,2	16,0	5,0	430,0	12,0	476,0	615,0	6,0	47,00	1000
DSH-300	300	292,0		5,15	4,00	5,00		285,0		16,2	16,0	5,0	440,0	12,0	475,0	619,0	6,0	47,00	1000
DSH-305	305	295,0		6,20	5,00	6,00		288,0		20,2	20,0	6,0	738,0	15,0	1036,0	785,0	7,0	89,00	1000
DSH-310	310	300,0		6,20	5,00	6,00		293,0		20,2	20,0	6,0	750,0	15,0	1016,0	796,0	7,0	87,00	1000
DSH-315	315	305,0		6,20	5,00	6,00		298,0		20,2	20,0	6,0	760,0	15,0	1007,0	811,0	7,0	86,00	1000
DSH-320	320	310,0		6,20	5,00	6,00		303,0		20,2	20,0	6,0	770,0	15,0	988,0	825,0	7,0	85,00	1000
DSH-325	325	315,0		6,20	5,00	6,00		308,0		20,2	20,0	6,0	787,0	15,0	975,0	837,0	7,0	83,00	1000
DSH-330	330	320,0		6,20	5,00	6,00		313,0		20,2	20,0	6,0	800,0	15,0	958,0	850,0	7,0	82,00	1000
DSH-335	335	325,0		6,20	5,00	6,00		318,0		20,2	20,0	6,0	826,0	15,0	945,0	864,0	7,0	81,00	1000
DSH-340	340	330,0		6,20	5,00	6,00		323,0		20,2	20,0	6,0	840,0	15,0	932,0	876,0	7,0	80,00	1000
DSH-345	345	335,0		6,20	5,00	6,00		328,0		20,2	20,0	6,0	845,0	15,0	917,0	890,0	7,0	79,00	1000
DSH-350	350	340,0		6,20	5,00	6,00	-0,15	333,0		20,2	20,0	6,0	850,0	15,0	906,0	903,0	7,0	77,00	1000
DSH-355	355	345,0		6,20	5,00	6,00		338,0		20,2	20,0	6,0	865,0	15,0	894,0	916,0	7,0	76,00	1000
DSH-360	360	350,0	-0,89	6,20	5,00	6,00		343,0	+0,90	20,2	20,0	6,0	880,0	15,0	880,0	928,0	7,0	75,00	1000
DSH-365	365	355,0		6,20	5,00	6,00		348,0	-2,00	20,2	20,0	6,0	885,0	15,0	868,0	942,0	7,0	74,00	1000
DSH-370	370	360,0		6,20	5,00	6,00		353,0		20,2	20,0	6,0	890,0	15,0	856,0	955,0	7,0	73,00	1000
DSH-375	375	365,0		6,20	5,00	6,00		358,0		20,2	20,0	6,0	910,0	15,0	847,0	968,0	7,0	72,00	1000
DSH-380	380	370,0		6,20	5,00	6,00		363,0		20,2	20,0	6,0	930,0	15,0	833,0	980,0	7,0	71,00	1000
DSH-385	385	375,0		6,20	5,00	6,00		368,0		20,2	20,0	6,0	940,0	15,0	823,0	994,0	7,0	70,00	1000
DSH-390	390	380,0		6,20	5,00	6,00		373,0		20,2	20,0	6,0	950,0	15,0	814,0	1008,0	7,0	70,00	1000
DSH-395	395	385,0		6,20	5,00	6,00		378,0		20,2	20,0	6,0	990,0	15,0	803,0	1021,0	7,0	69,00	1000
DSH-400	400	390,0		6,20	5,00	6,00		383,0		20,2	20,0	6,0	1040,0	15,0	793,0	1033,0	7,0	69,00	1000

*** FOR PLATED RINGS, ADD 0.05 TO THE LISTED MAXIMUM THICKNESS. MAXIMUM RING THICKNESS WILL BE A MINIMUM OF 0.005

LESS THAN THE LISTED GROOVE WIDTH (W) MINIMUM.

ALL DIMENSIONS IN MILLIMETERS.

*The radius "R" on the load side must not exceed 0.1T.

HARDNESS RANGES: CARBON STEEL RINGS (SAE 1060-1090)

RING TYPE	SIZE RANGE	HARDNESS		
		VICKERS	ROCKWELL	
			HRC	LOWER SCALE**
DSH	3 & 4	470-580	47-54	84-87.5 HR30N**
	5-17	470-580	47-54	66-72 HR30N
	18-48	470-580	47-54	-
	50-200	435-530	44-51	-
	202-300	390-470	40-47	-
	305-400	370-415	38-43	-

*WHERE APPLICABLE

**HARDNESS CAN NOT BE CHECKED WITH ANY DEGREE OF ACCURACY DIRECTLY ON THESE RINGS.

HARDNESS RANGES: STAINLESS STEEL RINGS (PH 15-7M0)

RING TYPE	SIZE RANGE	HARDNESS		
		VICKERS	ROCKWELL	
			HRC	LOWER SCALE*
DSH	3 & 4	435-530	44-51	82.5-86 HR30N**
	5-17	435-530	44-51	63-69.5 HR30N
	18-400	435-530	44-51	-

*WHERE APPLICABLE

**HARDNESS CAN NOT BE CHECKED WITH ANY DEGREE OF ACCURACY DIRECTLY ON THESE RINGS.

